

## Office/Warehouse



### ***3046 E. Seltice Way, Post Falls***

High Profile 3,800 square foot office/warehouse flex building, built in 2004 and located on busy Seltice Way, between Greensferry Road and Hwy 41 in Post Falls, Idaho. Building is on 0.31 acres. Building would be great for a retail showroom with a warehouse distribution center in the back. However, current configuration allows for many different uses. Paved parking. Landscaping and sidewalks are installed.  
**Possible seller financing.**

**Offered at \$359,000**

**Entire project which includes building and separate land listing totaling 0.615 acres could be purchased together for \$459,000.**



**Showroom/Office Space**



**Warehouse**



**Warehouse**



**Vacant part of the Lot**

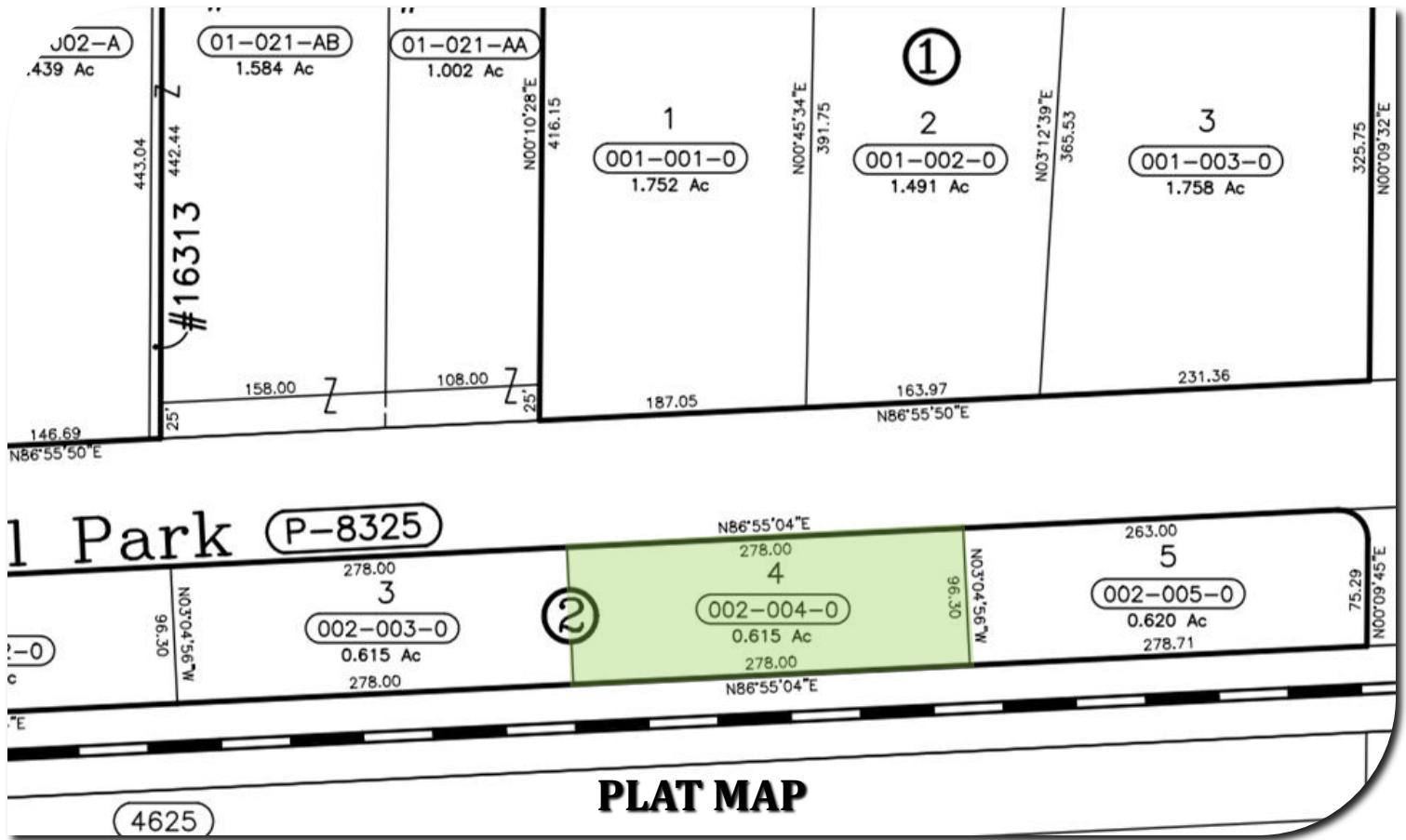


**Looking West towards the building**



**Parking lot facing East**





**PLAT MAP**

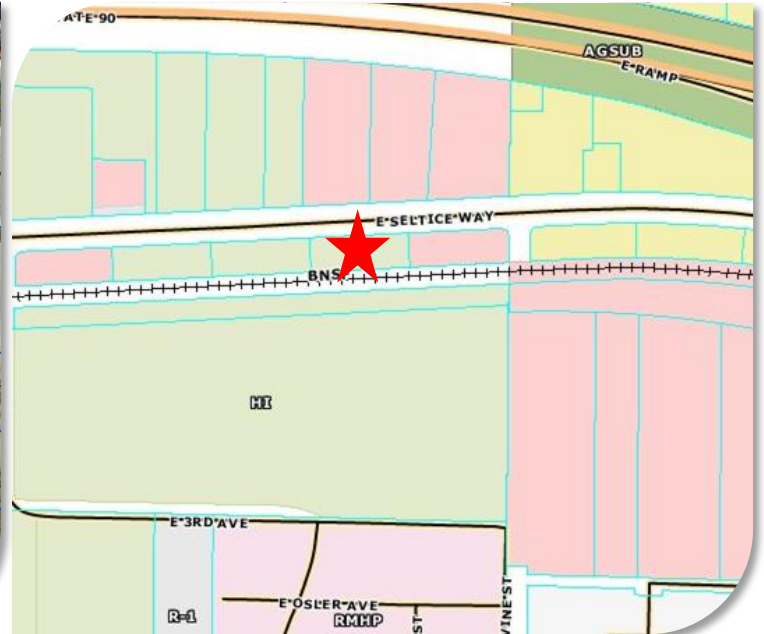


**PARCEL:**

#: P83250020040

**TAX ID:**

#: 104830



**ZONING:**

PINK: CCS

GREEN: HEAVY INDUSTRIAL

YELLOW: INDUSTRIAL