

Office/Professional

EXECUTIVE SUMMARY



12929 E. Riverside Avenue, Spokane

1784 sqft stand alone building on a .30 acre lot just off of McDonald and Sprague near the Valley Hospital. Amenities include high speed internet, phone system, side-yard and great parking. Perfect for an architect/draftsman, computer company, daycare or medical use.

Offered at \$149,500



Side Yard



Outside Basement Entrance



McDonald Road



Outside Storage Available



Finished Basement



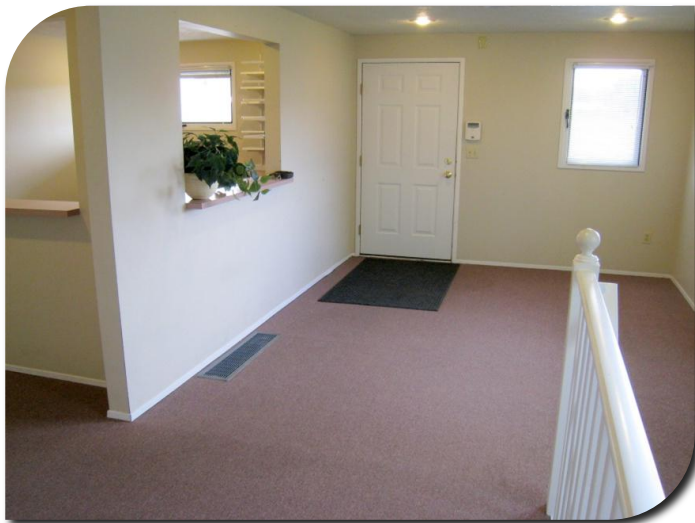
Finished Basement



Basement Conference Room



Front Entry



Waiting Area



Reception



1 of Several Private Offices



Main Floor Conference Room

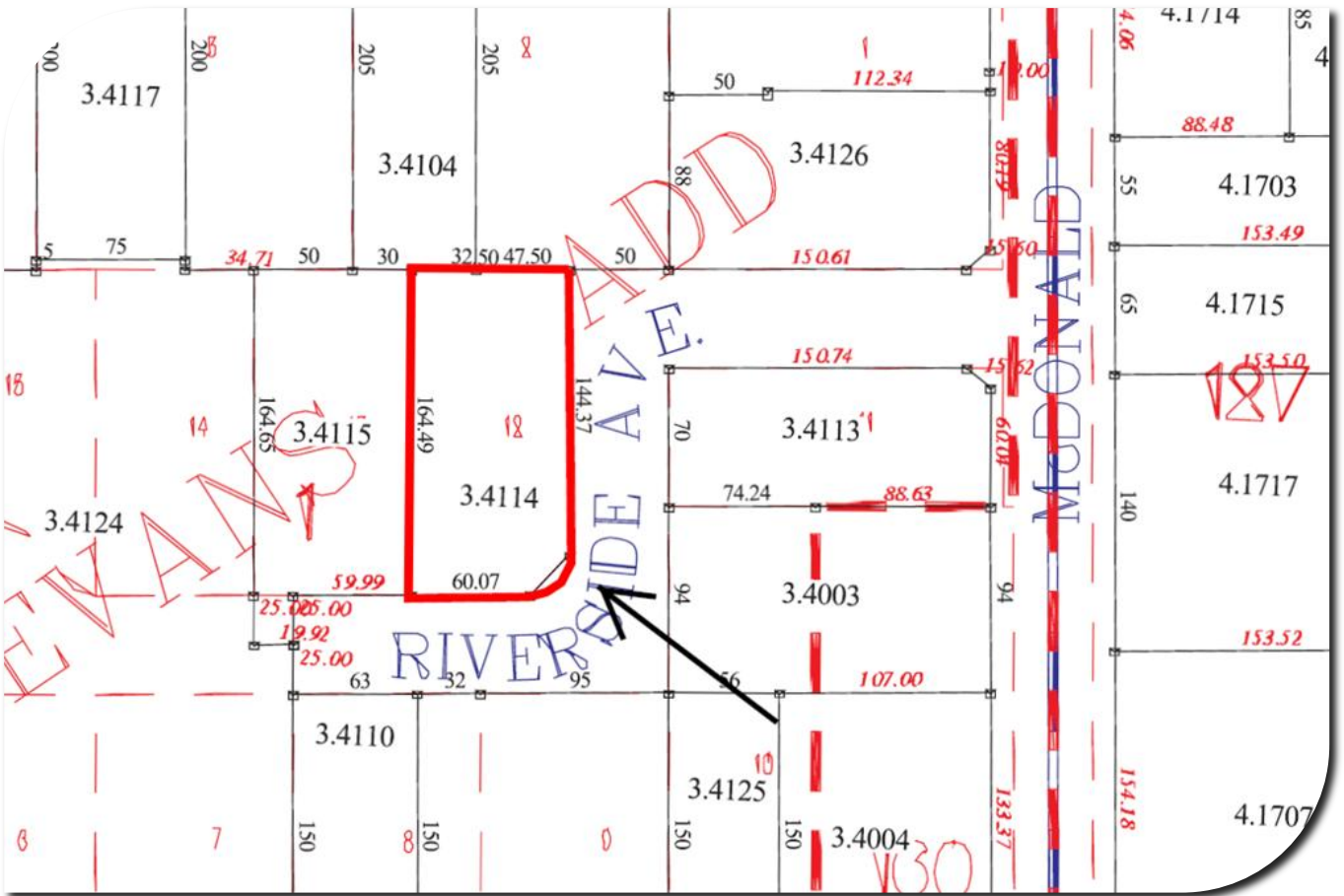
AERIAL VIEW



SATELLITE VIEW



SW 1/4 15-25-44



ZONING MAP



ZONING OVERLAY

