

Coldwell Banker Commercial Schneidmiller Realty

Contact: Craig Hunter | Direct: 208-929-2929 | Fax: 208-446-0609 | Email: hunter@ccim.net

Contact: Rob Kannapien | Direct: 208-704-3832 | WA: 509-720-7241 | Fax: 208-292-3651 | Email: robk@ccim.net



FOR LEASE

Lease Rate:
\$0.85 PSF

Lease Type:
+ Utilities

Property Details:

Property Type:
Commercial Building

Property Use Type:
Office/Retail

Tenant: Multiple
% Occupied: 40%

Parcel Number: R43900020060
AIN Number: 221361

Lot Size: 0.75 Acres
Dimensions: 180 x 185

Building Size: 6,700 sf
Dimensions: Irregular

Year Built:
2000

Water: City
Sewer: City

Utilities:
Avista, City of Rathdrum

Tax Year: 2010
Amount: \$8,140

County:
Kootenai

Zoning:
Commercial

Legal:
PARK WOOD PLAZA, LT 6 BLK 2

6600 W. Commercial Park Avenue, Rathdrum, Suite C

Description:

Rathdrum Commercial Center. Well located Class 'A' retail/office building. This suite is 1,650 square feet. Professionally landscaped with plenty of parking. Owner motivated to make a deal happen for the right tenant. Current tenants include Edward Jones and No Bad Days Tanning.

Nearby business's include Super 1 Foods, Rathdrum Animal Shelter, Perfection Tire, Panhandle State Bank and Medicine Man Pharmacy.

Directions:

N. On Hwy 41, continue east onto Hwy 53 approx. 0.2 miles, right onto Westwood Drive, Left onto Commercial Parkway.

Showing Instructions:

Call Listing Agents

Please visit our website at
www.ccimteam.com for more info



SCHNEIDMILLER REALTY
2000 Northwest Blvd. Suite 200
Coeur d'Alene, ID 83814



Data is deemed reliable, no warranties or representations expressed or implied. Broker not responsible for changes, errors, omissions, or prior sale without notice. All square footages are for convenience only. All critical measurements shall be done by Lessee or Buyer.



Coldwell Banker Commercial Schneidmiller Realty

Contact: Craig Hunter | Direct: 208-929-2929 | Fax: 208-446-0609 | Email: hunter@ccim.net

Contact: Rob Kannapien | Direct: 208-704-3832 | WA: 509-720-7241 | Fax: 208-292-3651 | Email: robk@ccim.net



SCHNEIDMILLER REALTY
2000 Northwest Blvd. Suite 200
Coeur d'Alene, ID 83814



Data is deemed reliable, no warranties or representations expressed or implied. Broker not responsible for changes, errors, omissions, or prior sale without notice. All square footages are for convenience only. All critical measurements shall be done by Lessee or Buyer.



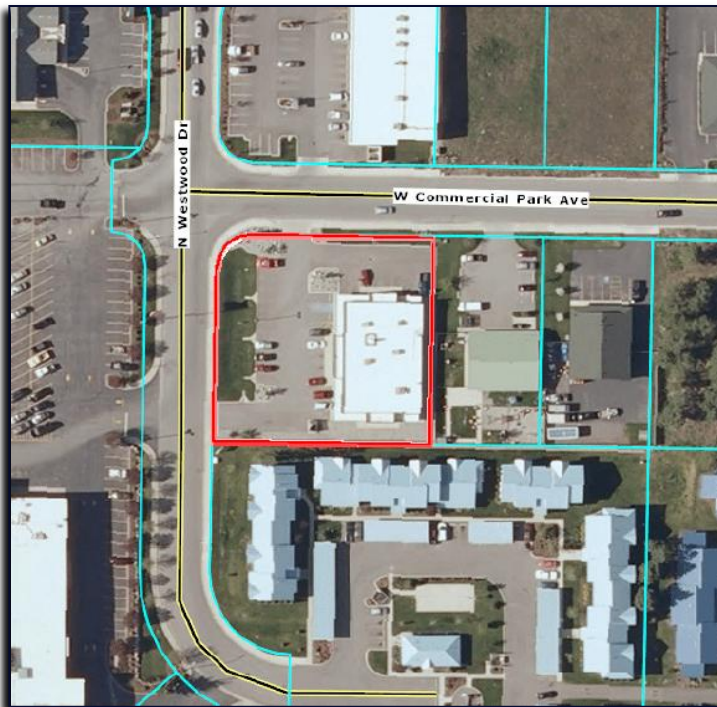
Coldwell Banker Commercial Schneidmiller Realty

Contact: Craig Hunter | Direct: 208-929-2929 | Fax: 208-446-0609 | Email: hunter@ccim.net

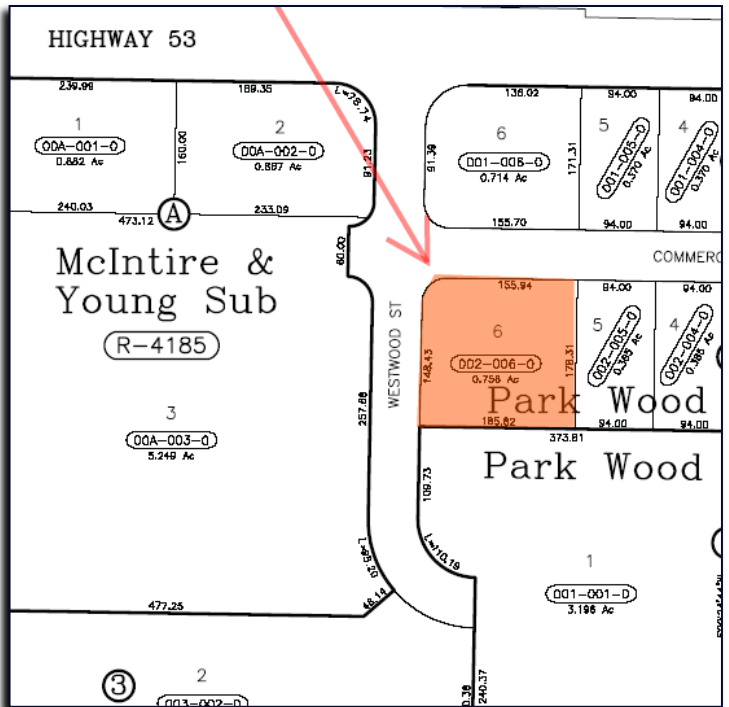
Contact: Rob Kannapien | Direct: 208-704-3832 | WA: 509-720-7241 | Fax: 208-292-3651 | Email: robk@ccim.net



Zoning:



Plat Map:



SCHNEIDMILLER REALTY
2000 Northwest Blvd, Suite 200
Coeur d'Alene, ID 83814



Data is deemed reliable, no warranties or representations expressed or implied. Broker not responsible for changes, errors, omissions, or prior sale without notice. All square footages are for convenience only. All critical measurements shall be done by Lessee or Buyer.



Coldwell Banker Commercial Schneidmiller Realty

Contact: Craig Hunter | Direct: 208-929-2929 | Fax: 208-446-0609 | Email: hunter@ccim.net

Contact: Rob Kannapien | Direct: 208-704-3832 | WA: 509-720-7241 | Fax: 208-292-3651 | Email: robk@ccim.net

Commercial Park Avenue

