

Coldwell Banker Commercial Schneidmiller Realty

Contact: Craig Hunter | Direct: 208-929-2929 | Fax: 208-446-0609 | Email: hunter@ccim.net

Contact: Rob Kannapien | Direct: 208-704-3832 | WA: 509-720-7241 | Fax: 208-292-3651 | Email: robk@ccim.net



4951 N. Building Center Drive, Coeur d'Alene

Description:

Perfect for a new business startup. Excellent central location for a small manufacturing company. Zoned Light Manufacturing and centrally located in Coeur d'Alene, this 1,250 square foot suite is heated and has a 12 x 12 rollup door. The office is about 200 square feet with electric heat and there is one ADA bathroom. Great building to allow access for future expansion or storage.

Directions:

W. Kathleen Avenue, North onto Building Center Drive. Property is the first you come to on the Left.

Showing Instructions:

Call Listing Agents.

Please visit our website at

www.ccimteam.com for more info

FOR LEASE

Lease Rate:

\$650 Per Month + Utilities

Lease Type:

Gross

Property Details:

Property Type:

Commercial Building

Property Use Type:

Office/Warehouse

Tenant:

Multiple

% Occupied:

Parcel Number:

C0350001001A

AIN Number:

205703

Lot Size:

0.94 Acres

Dimensions:

Irregular

Building Size:

11,000 SF

Dimensions:

220 x 50

Year Built:

1998

Water:

City

Sewer:

City

Utilities:

Avista, City of CdA

Tax Year:

2010

Amount:

\$7,449

County:

Kootenai

Zoning:

Light Manufacturing

Legal:

ATLAS CENTER, LTS 1 & 2 BLK 1



SCHNEIDMILLER REALTY
2000 Northwest Blvd. Suite 200
Coeur d'Alene, ID 83814



Data is deemed reliable, no warranties or representations expressed or implied. Broker not responsible for changes, errors, omissions, or prior sale without notice. All square footages are for convenience only. All critical measurements shall be done by Lessee or Buyer.



Coldwell Banker Commercial Schneidmiller Realty

Contact: Craig Hunter | Direct: 208-929-2929 | Fax: 208-446-0609 | Email: hunter@ccim.net

Contact: Rob Kannapien | Direct: 208-704-3832 | WA: 509-720-7241 | Fax: 208-292-3651 | Email: robk@ccim.net



SCHNEIDMILLER REALTY
2000 Northwest Blvd. Suite 200
Coeur d'Alene, ID 83814



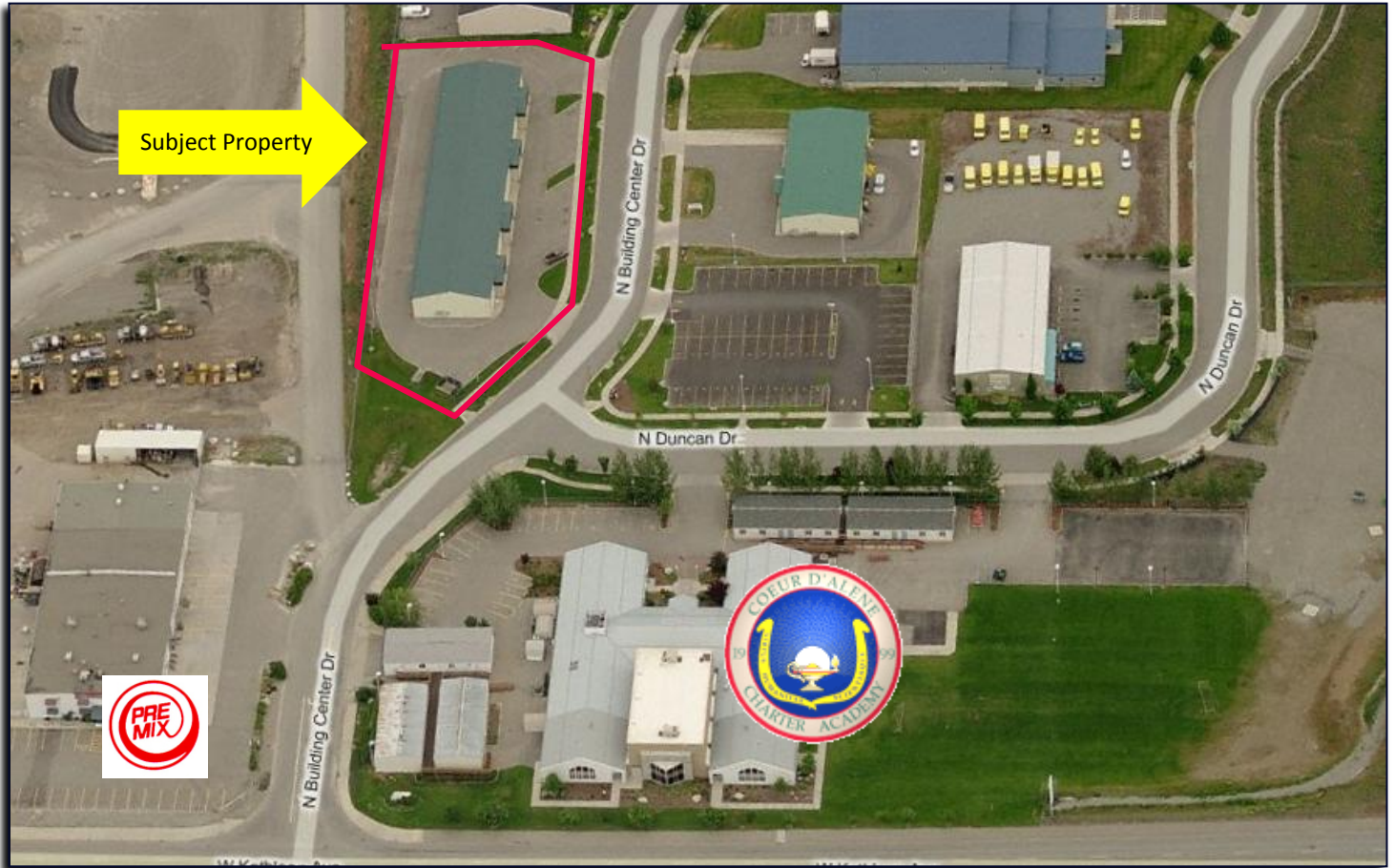
Data is deemed reliable, no warranties or representations expressed or implied. Broker not responsible for changes, errors, omissions, or prior sale without notice. All square footages are for convenience only. All critical measurements shall be done by Lessee or Buyer.



Coldwell Banker Commercial Schneidmiller Realty

Contact: Craig Hunter | Direct: 208-929-2929 | Fax: 208-446-0609 | Email: hunter@ccim.net

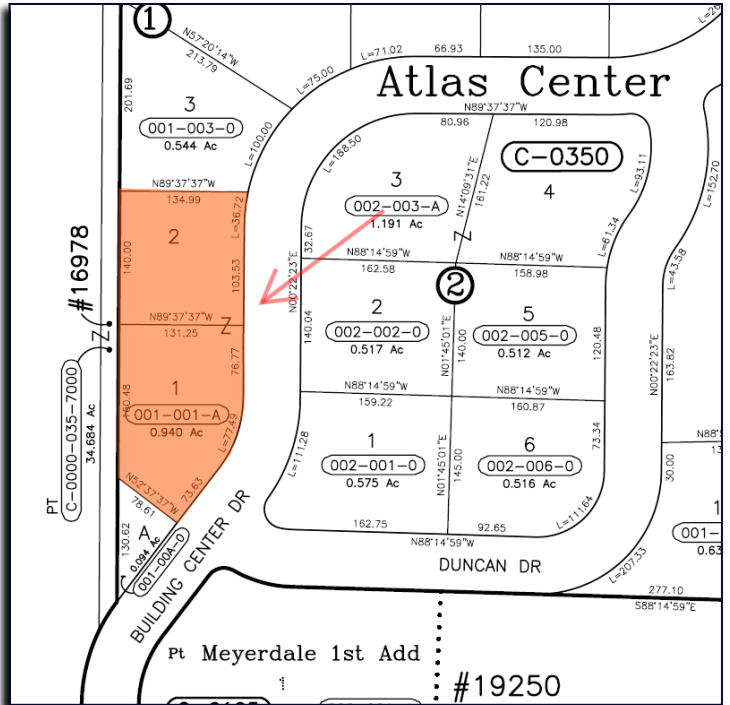
Contact: Rob Kannapien | Direct: 208-704-3832 | WA: 509-720-7241 | Fax: 208-292-3651 | Email: robk@ccim.net



Zoning:



Plat Map:



SCHNEIDMILLER REALTY
2000 Northwest Blvd, Suite 200
Coeur d'Alene, ID 83814



Data is deemed reliable, no warranties or representations expressed or implied. Broker not responsible for changes, errors, omissions, or prior sale without notice. All square footages are for convenience only. All critical measurements shall be done by Lessee or Buyer.

