

High Visibility Service/Repair Shop



1425 E. Sherman Avenue, Coeur d'Alene

Great Opportunity to own this 3,815 square foot, auto repair/service related building on the busy corner of Sherman Avenue and 15th Street, currently operated as Computune. Ample parking on 0.24 acres. Building has two, 14 foot overhead doors, one with direct access from 15th street, that are large enough for RV's or big trucks. There are also two, 10 foot overhead doors off Sherman.

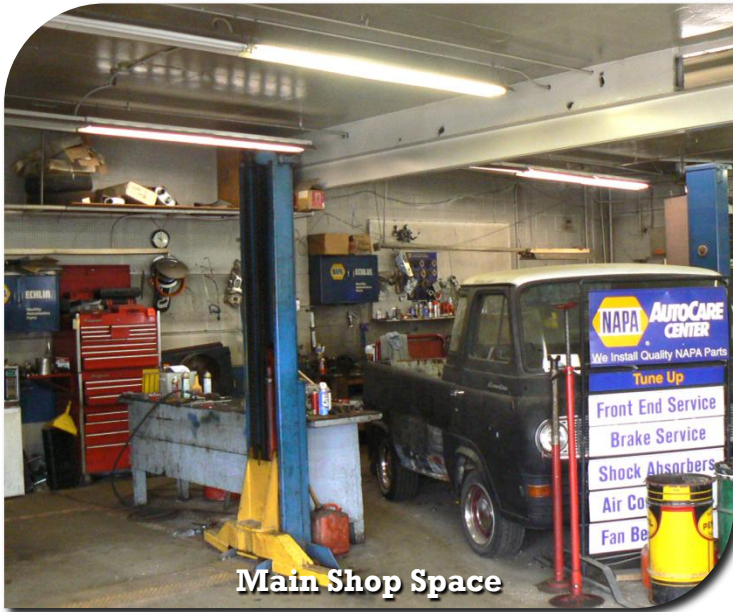
Offered at
\$2,700 Per Month, NNN



Extra Parking or Storage



Rear Service Bay Entrance



Main Shop Space



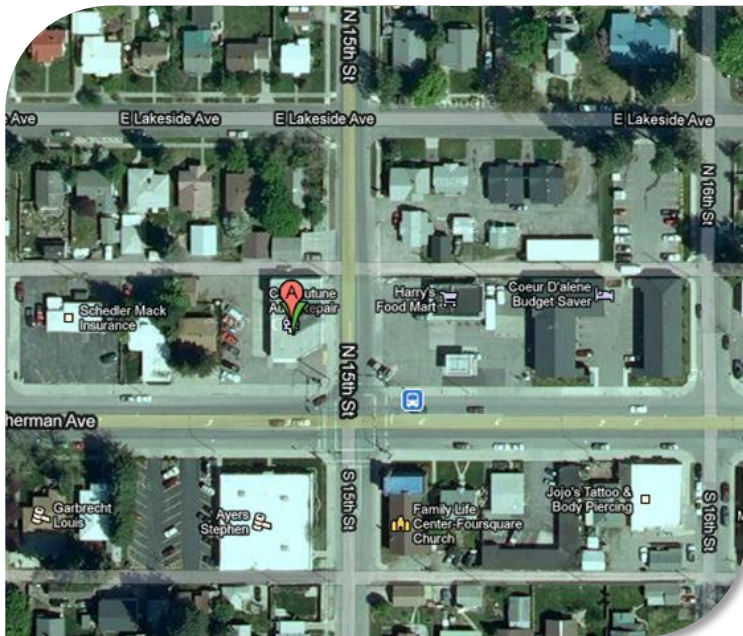
Main Shop Space



Office/Waiting room



Large Service Bay

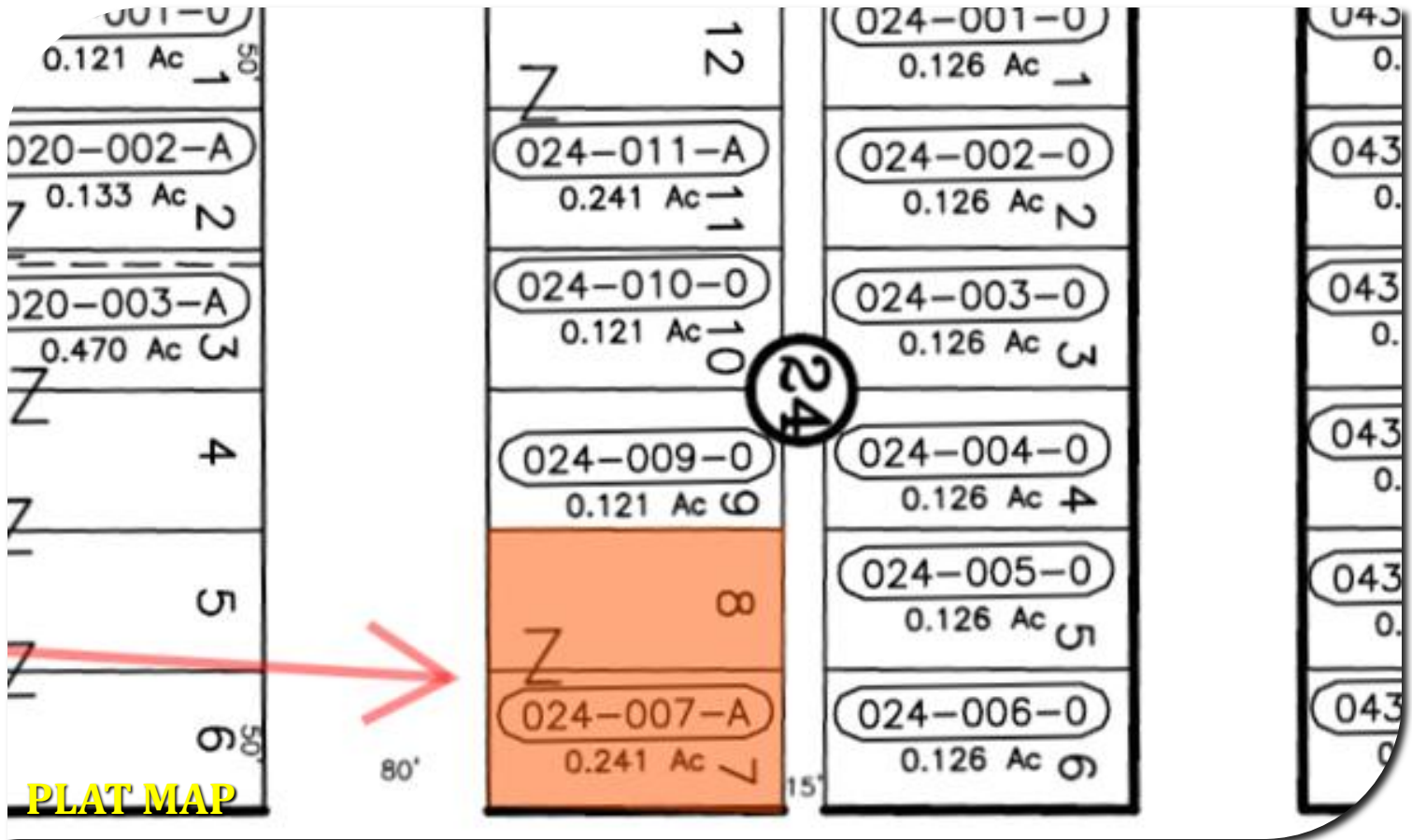


LEGAL DESCRIPTION:

O'BRIENS-3RD ADD TO CDA, LT 7,8
BLK 24

AVERAGE DAILY TRAFFIC VOLUME:

- ◆ Up to 6,000 Vehicles Per Day
- ◆ 6,001 - 15,000
- ◆ 15,001 - 30,000
- ◆ 30,001 - 50,000
- ◆ 50,001 - 100,000
- ◆ More than 100,000 Per Day



PARCEL:

#: C6885024007A

TAX ID:

#: 111878



ZONING:

BLUE: R-17

GREEN: C-17

WHITE: R-12